

ROTARY HAMMER SDS MAX

HR4013C

- Technical specifications
- User benefits
- Vibration
- Standard equipment
- Information & Technologies
- Health and Safety

Model HR4013C is the successor model of the current HR4001C series models and developed to provide higher operating efficiency and more comfort with unrivalled low level of vibration.

Find out more information on the HR4013C >>

Please note: Any accessories shown are not necessarily supplied as standard equipment.



Click to view larger image

Product sheet
User manual
Warranty information

Vibration calculator
Compare product
Ask Makita
Find a dealer

Technical specifications

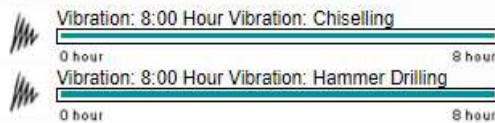
Top

Impact energy	8.0 J
Max in concrete	40 mm
Impacts per minute	1450 - 2900 ipm
Input Wattage	1000 w
Vibration K factor	1.5 m/sec ²
No Load Speed	250 - 500 rpm
Vibration: Chiselling	4.5 m/sec ²
Vibration: Hammer Drilling	5 m/sec ²
Net weight with pipes	6.8 kg

Maximum vibration exposure per day

Top

All vibration figures quoted are Tri-axial to EN60745 2006



User benefits

Top

- One touch sliding chuck for easy bit installation and removal.
- Easy to operate operation-mode change lever. Located on the top of the motor housing for reduced possibility of breakage.
- "Soft no load" function automatically reduces the motor speed during idling to suppress the vibration of the machine body.
- Unrivalled low level of vibration aided by vibration absorbing housing.
- LED service light indicates when to replace carbon brush.
- In hammering mode, on/off switch is switchable between two switches to meet your application: For Continuous or Intermittent chiseling applications.

Standard equipment

Top

- Side handle
- Depth stop
- Bit grease
- Carry case

Information & Technologies

Top

AVT
ANTI VIBRATION TECHNOLOGY

