



SAINT-GOBAIN ABRASIVES



Floor Saw ▶ CS 451

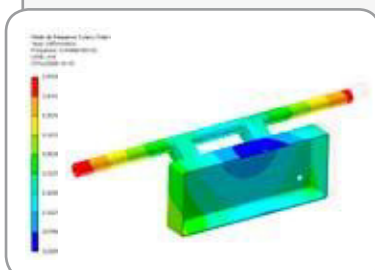
40%
LESS VIBRATION

The **CLIPPER CS451** is the new generation Clipper floor saw designed to combine robustness, functionality with a **vibration level reduced by 40%** versus our best selling C99 floor saw.

Tested according to the latest European Standard EN12096/EN13862, this **vibration level is one of the lowest in the market place** and allows the user to operate the machine all day while remaining within the daily recommended HAV exposure level.

Its main features are :

- Compact and efficient, with optimal weight distribution and a robust frame.
- Adjustable ergonomic handle which stays level at any cutting depth.
- Vibration absorbers which drastically reduce the vibrations transferred to the operator's hands.
- Two cutting guides attached to the blade cover for better control of the cutting direction.'



clipper

Floor Saw ▶ CS 451

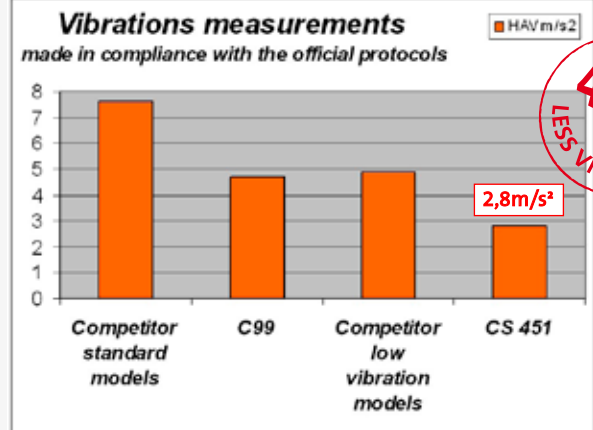


13 Hp
 Ø 450
 112kg
 Petrol

Features	Benefits
Handlebar equipped with vibration absorbers	Improved user working conditions
Adjustable handlebar height	Ergonomic user working position
Optimised weight distribution (positioning of motor and tank)	Outstanding cutting performance
High capacity water tank (25L)	Wet cutting possibility, even far from water supply
Easily removable water tank	User friendly
Two cutting guides (on top of blade guard and in front of the machine)	Helps user to maintain straight and accurate cut
Continuous depth control with handwheel and gauge	Quick, easy and accurate setting
Integrated lifting hook	Easy loading and transportation
Rear wheels in recess from the cut	Easy cut along an open trench
Pulleys with removable hub and Poly V belts	Reliable and easy to maintain
Heavy duty bearings with nipples on 30mm diameter shaft	Easy maintenance
Parking brake	Safety

Technical datas

Power source	Petrol
Motor type	HONDA GX390 Cyclonic
Power kW (Hp)	9,6kW (13Hp)
Max blade x bore	Ø 450 x 25,4mm
Max. cutting depth	170
Water tank capacity	25L
Tool speed RPM	2573 min ⁻¹
Starter	Recoil
Raise and lower	Manual
Propelling	Push
Hand Arm Vibrations (hourly limit)	2,8m/s ²
Sound power / pressure level	105 dB (A) / 88 dB (A)
Dimensions (LxWxH)	1180 x 538 x 1040mm
Weight	112kg



Easy removal of water tank.



Handlebar equipped with vibration absorbers.



Rear cutting guide.



Pulleys with removable hub and Poly V belts.



EN13862



www.construction.norton.eu

SAINT-GOBAIN ABRASIVES S.A.

190 Bd J.F. Kennedy
 L-4930 BASCHARAGE
 Luxembourg

Tel : +352 504 01 1
 Fax : +352 501 633
sales.nlx@saint-gobain.com